



Dear *POLLcats*,

Those of us who have the privilege to work in elections know the satisfaction and excitement that comes from serving our fellow citizens in the practice of democracy. Every election is unique, and since November's election will be our first full deployment of the eSlates, this election will definitely be different.

We have planned for these differences. Some of the new things that will be in place for this election are: 1) fewer receiving stations; 2) improved field technician support (more techs and more training); 3) special poll opening technicians to provide added support first thing in the morning; 4) new closing procedures that will strengthen accountability and security; 5) improved eSlate Training Lab assistance; and 6) judges will now be paid \$100 for Election Day service.

In this issue, we review the top two areas where poll workers have had difficulty in past elections, so please take note.

On Election Day, remind voters to "Verify Your Vote." This is a very important part of the voting experience. Each voter must check their electronic record against their paper record before they push the Cast Ballot button on the eSlate. Furthermore – I know you won't forget – but state law guarantees any voter the right to vote a paper ballot. It's their choice.

Lastly, I have a surprise for you! We will hold a drawing after the election to give away three turkeys. Any poll worker who serves in November will be placed in the drawing, and you will be personally notified once I've pulled the winning names from a hat.

Thank you for your service. Best wishes for a very successful Election Day!

Warren Slocum

Opening the Polls

Election Day was fast approaching. Ralph began reviewing the lessons of the Poll Worker Academy, made an appointment to go to the eSlate Lab and signed up for the mandatory Procedures Class online. That was a first. He had to call and get a little help, but he did it and it wasn't hard.

He thought to get out his old copies of the *POLLcat* and review some of those stories, but then he realized he'd already recycled them. He vaguely remembered that someone had said that the back issues were published on the Elections Web site, www.shapethefuture.org. The next time he sat down at his computer, he'd just look for them under the Poll Worker section and review them one more time. He seemed to recall there were two common incidents for poll workers.

The Most Common Incident: The Booth Assignment Step

Ralph knew this was an easy step, but he also knew that the onscreen error message if the booth assignment step was skipped would read "Unavailable eSlate." That message would not help anybody figure out what needed to be done. Ralph recalled that when booths were assigned, each booth was activated one at a time by pushing the "Enter" key on the eSlate followed by a push of the "Next" button on the JBC. This was the activation process until all booths had been assigned their own unique number by the JBC. He also knew they could press "Start Over" on the JBC. Ralph felt confident that his team would not encounter this error, as they had practiced this carefully. And, if they did, they'd fix it in a minute. No sweat.



The Second Most Common Incident: Loose Power and Cable Connections

The loose power and cable connection problem seemed like a no-brainer, except for the fact that Ralph knew there were 25 to 30 connections to check to set up a single polling place properly. Additionally, if anyone got distracted during the setup process, it might be easy to think something

was completely and perfectly connected when it might not be. He also knew that finding a loose connection was simply a matter of being methodical. He made up his mind to start at the JBC and systematically double-check every data and power connection in the entire daisy-chain. Once that was done, he would unplug the JBC power cord and plug it back in to recycle the power. That would tell him definitively if all the connections were intact. If not, he would start over and repeat the process. Undeterred.

Closing the Polls

Election Night closing procedures have changed to increase security, accuracy and ensure that the dual-custody rule and chain-of-custody procedures are in place throughout the entire election process.

In the Procedures Class, you will learn the new steps to inspect and secure the voting system to make sure it's tamper free. You will also learn about new procedures to finish the ballot reconciliation process and pack up as a team on Election Night. The goal is to complete all work as a team, maintain security procedures and work through the new closing procedures together. Its effect on the speed of initial election returns remains to be seen.



There will be 14 receiving stations this year (not the usual 20). The inspector and one judge will return all of the supplies to the receiving station once the closing process is completed and all work is done. That means they'll bring the RED supply case, the WHITE JBC box, and the BLUE ballot box – in a single trip to the receiving station at the end of the night.

Center Stage

Evelyn Kaplan, an inspector at Highlands Elementary School in San Mateo and a recent graduate of the Poll Worker Academy II, has been a poll worker in San Mateo County since 1964.



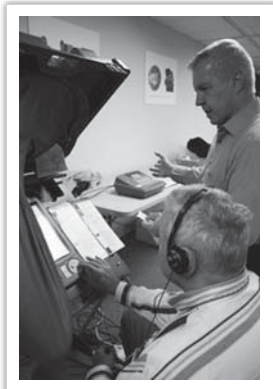
Evelyn Kaplan

At the academy graduation, Jackie Jacobberger, past president of the League of Women Voters of California, revealed that Evelyn was also a former statewide chairman of the League of Women Voters.

When asked what year she served as the statewide league president, Evelyn replied, "It was 1973 and Ronald Reagan was governor of California. In fact, I signed a statewide ballot measure argument and didn't think it would be kosher if I served at the polls. It's the only election I've missed since 1964."

Evelyn said she looks forward to Election Day. "It's a chance I have to see everyone in my community!"

eSlate Labs - A Must Visit



The eSlate Training Lab, located at 800 S. Claremont St. in San Mateo, is open six days a week to give you the chance to practice setting up, closing down, troubleshooting and helping voters use the accessible features on the eSlates. There's nothing like hands-on time.

Here's what we suggest you do: Make a date with a friend, and

put in your reservations online at www.shapethefuture.org or by calling the Elections Office at (650) 286-2810. When that day rolls around, go have a cup of coffee downtown, visit with others in the lab and make a day of it.

We mailed a schedule to all poll workers, but if you've misplaced yours, you can always go online and take a look or call the Election Office at (650) 286-2810 to find out when the labs are open and what lessons are being reviewed when. We've decked the lab out in style – the posters of the Poll Worker Pin Collection are hanging on the walls.

WARREN SLOCUM
CHIEF ELECTIONS OFFICER
COUNTY OF SAN MATEO
SAN MATEO COUNTY REGISTRATION & ELECTION DIVISION
40 TOWER ROAD
SAN MATEO CA 94402-4035

Sixty Precincts Moved

Where you're serving and where you're voting may have changed this election! We recently completed an inventory and analysis of the polling locations in San Mateo County. This was done in order to ensure that all future elections will comply with new federal and state standards and laws.

Precinct boundaries, jurisdictions served by each precinct and the physical aspects of each polling location were assessed for size, accessibility and power. As a result, more than 60 polling places were moved, some precincts were combined and others were decommissioned altogether. Even the precinct where Warren has voted for the past 18 years was moved.

Be sure to double-check the location of your precinct on the back cover of your Sample Ballot and tell your friends and neighbors to do the same!

Poll Worker Academy II Graduation



Four hundred Poll Worker Academy II graduates gathered at the College of San Mateo on a very balmy September afternoon for congratulations, appreciation, food, music and fun. A grand time was

had by all. It was a sight to see all who had given their time and energy to commit to mastering the eSlates. Elections staff did an eSlate song and dance number on stage, which made for a memorable ceremony. Thanks to all of you.

Do You Blog?

Don't know what a blog is? Don't worry. It's an online journal with attitude. It's the newest feature of our Web site, www.shapethefuture.org. Our blog aims to bring readers inside Election Land, if you will, and give them an in-depth look at all the preparation that goes into the casting of their vote on Election Day. Everyone knows that their ballot shows up in their mailbox or they vote on an eSlate on Election Day, but what goes on behind the scenes to get it there?

We hope you'll read it, as articles are posted most every day. From logic and accuracy testing to the Poll Worker Academy II Graduation event, we write about it all. There are photos, quotes and occasionally some humor.

NONPROFIT ORG.
U.S. POSTAGE
PAID
REDWOOD CITY, CA
PERMIT NO. 451